



THE DATASHEET OF
5975311407F



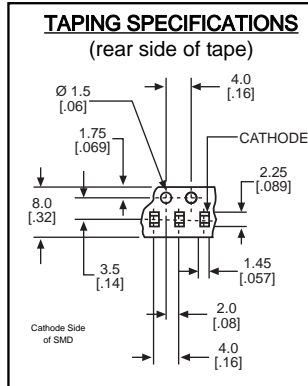
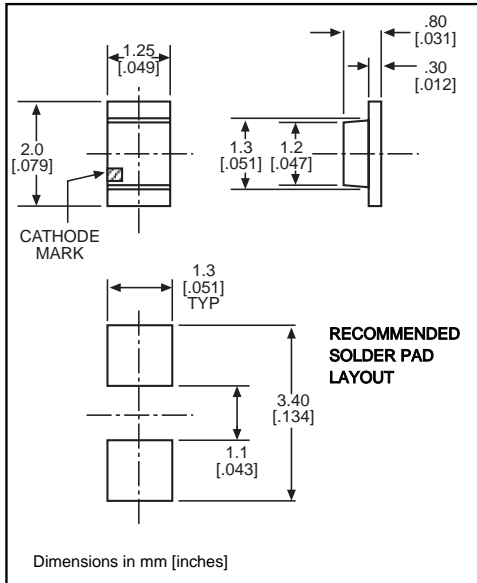


Surface Mount LED 0805 Type Package High Intensity LEDs



597-3xxx-4xx
597-5x11-4xx
597-5202-4xx

1



***ORDERING INFORMATION**

597-3xxx-4xx

packaging option →

02	20 pieces on tape
07	7" reel, 4000 pcs/reel

PART NO.*	COLOR
597-3003-4xx	AllnGaP Red
597-3212-4xx	Orange
597-3222-4xx	Yellow
597-5111-4xx	Red
597-5202-4xx	Orange
597-5311-4xx	Green
597-5411-4xx	Yellow

Features

- Very bright light output
- Highly efficient AllnGaP die
- Compatible with automatic placement equipment
- Compatible with infrared reflow processes
- Packaged on 8mm tape, 7" reels (meets EIA-481-1 standard)
- Compatible with Dialight's Optopipe™ Series light pipes

ABSOLUTE MAXIMUM RATINGS (T _A =25°C)	AllnGaP Red	Orange	Yellow	Red	Orange	Green	Yellow
	-3003	-3212	-3222	-5111	-5202	-5311	-5411
Power Dissipation (mW)	81	81	81	57.5	70	70	70
Forward Current (mA)	30	30	30	25	25	25	25
Derating (mA/°C) From 25°C	.43	.43	.43	.36	.36	.36	.36
Peak Current (mA) <i>Pulse width = 1 μs</i>	100	100	100	60	60	60	60
Operating Temperature (°C)	-40/+85	-40/+85	-40/+85	-30/+85	-30/+85	-30/+85	-30/+85
Storage Temperature (°C)	-40/+100	-40/+100	-40/+100	-40/+100	-40/+100	-40/+100	-40/+100
Soldering Profile	280°C peak 3 seconds			240°C peak 5 seconds			

Solder Adherence per MIL-STD-202E, Method 208C

OPERATING CHARACTERISTICS (T _A =25°C)		AllnGaP Red	Orange	Yellow	Red	Orange	Green	Yellow
		-3003	-3212	-3222	-5111	-5202	-5311	-5411
Luminous Intensity (mcd)	Min.	16	16	16	7	2.2	3.8	7
	Typical I _F =20mA	50	65	65	11.7	3.7	6.4	11.7
Peak Wavelength (nm) λ Peak	Typical	630	609	594	660	605	560	570
Viewing Angle (2θ ^{1/2})	Typical	156°	156°	156°	140°	140°	140°	140°
Forward Voltage (V) I _F =20mA	Typical	1.9	1.9	1.9	1.7	2.2	2.1	2.1
	Max.	2.4	2.4	2.4	2.3	2.8	2.8	2.8
Reverse Current (μA) (V _R = 5V)	Max	100	100	100	100	100	100	100

θ_{1/2} is the off axis angle at which the luminous intensity is half the axial luminous intensity




Looking for pricing, stock, or lifecycle information?

Click below to explore more details on WIN SOURCE:

 [View 5975311407F on WIN SOURCE](#)

 [Dialight Information](#)

Optimize Your Supply Chain with WIN SOURCE Solutions

-  Global Sourcing Solution
-  Obsolete Management
-  Cost Control Management
-  Shortage Management
-  Alternative Solution
-  Excess Inventory Management