



**THE DATASHEET OF  
2450AT18B100E**



# High Frequency Ceramic Solutions

## 2.4GHz Mini Antenna, SMT

P/N 2450AT18B100

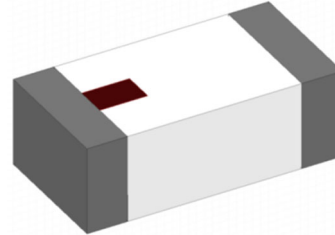
Detail Specification: 11/5/2018

Page 1 of 5

Let us help you with the antenna design, optimization, and tuning!

### General Specifications

Part Number	2450AT18B100		
Frequency (MHz)	2400 - 2500		
Avg. Rad Efficiency*	76%		
Peak Gain (dBi typ.)	0.5		
Average Gain (dBi typ.)	-0.5	Storage Temperature	-45 to +125°C
		Operating Temperature	-45 to +125°C
Return Loss (dB)	9.5 min.	Recommended Storage Conditions of unused product on T&R and period.	+5 to +35°C Humidity 45~75%RH 18 months max.
Impedance	50 Ω		
Input Power	2 Watts max. (CW)	Reel Quantity	3000pcs



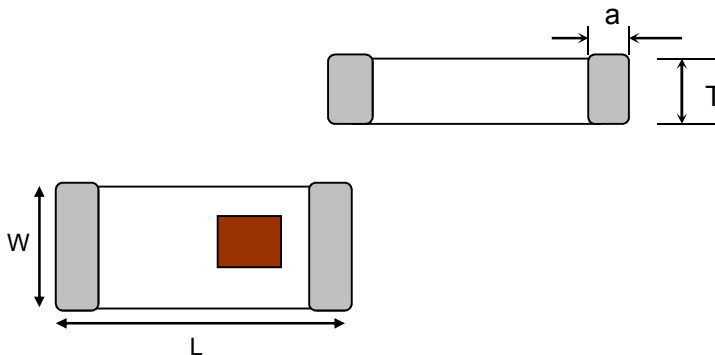
\*Efficiency based on Johanson's standard evaluation board

### Part Number Explanation

P/N Suffix	Packing Style	Bulk (loose)	Suffix = S	e.g. 2450AT18B100S
		T & R	Suffix = E	e.g. 2450AT18B100E
		100% Tin	Suffix = E or S	e.g. 2450AT18B100(E or S)
	Evaluation Board	2450AT18B100-EB1SMA (see page 2&3 for details)		

### Mechanical Dimensions

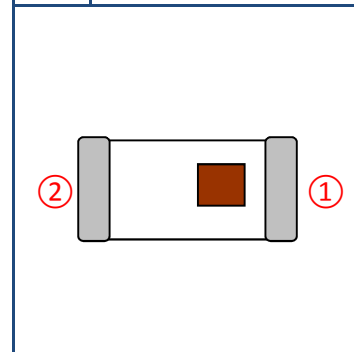
	In	mm
L	0.126 ± 0.008	3.20 ± 0.2
W	0.063 ± 0.008	1.60 ± 0.2
T	0.051 +.004/-0.008	1.30 +0.1/-0.2
a	0.020 ± 0.008	0.50 ± 0.2



Want the layout file? Request it at: <https://www.johansontechnology.com/ask-a-question>

### Terminal Configuration

No.	Function
1	FEED
2	NC



Johanson Technology, Inc. reserves the right to make design changes without notice.  
All sales are subject to Johanson Technology, Inc. terms and conditions.



<https://www.johansontechnology.com>

4001 Calle Tecate • Camarillo, CA 93012 • TEL 805.389.1166 FAX 805.389.1821

Ver. 4.0

2018 Johanson Technology, Inc. All Rights Reserved

# High Frequency Ceramic Solutions

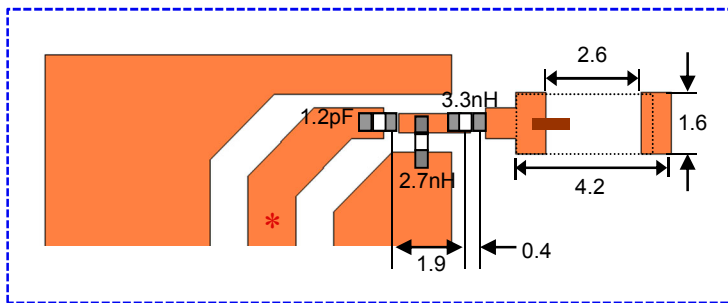
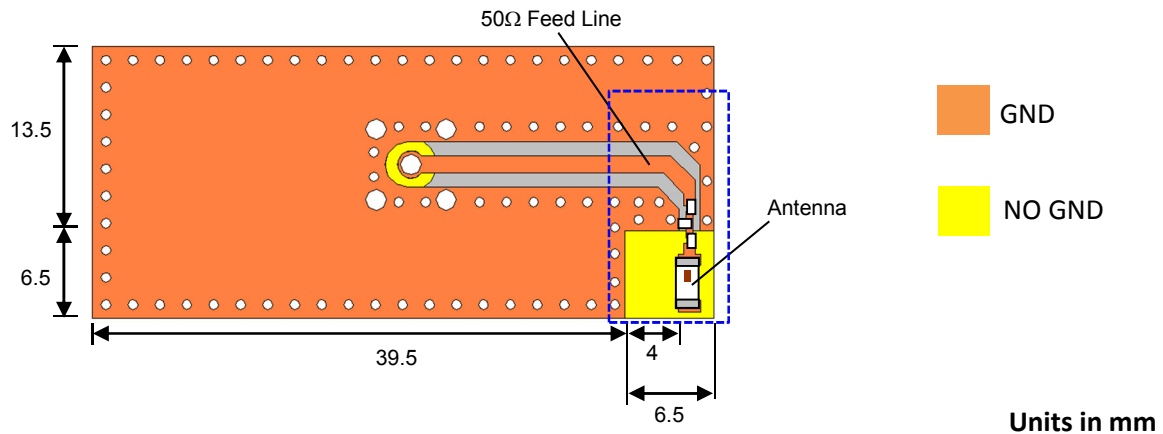
2.4GHz Mini Antenna, SMT

P/N 2450AT18B100

Detail Specification: 11/5/2018

Page 2 of 5

## Mounting Considerations 1: Evaluation Board



JTI P/N for Matching Circuit:  
Capacitor (1.2pF): 500R07S1R2BV4T  
Inductor (2.7nH): L-07C2N7SV6T  
Inductor (3.3nH): L-07C3N3SV6T

\*Line width should be designed to provide 50Ω impedance

To order a pre-tuned 50Ω EVB with a female SMA connector click here: <https://www.johansontechnology.com/request-a-sample>  
Reference p/n: 2450AT18B100-EB1SMA

Johanson Technology, Inc. reserves the right to make design changes without notice.  
All sales are subject to Johanson Technology, Inc. terms and conditions.



Ver. 4.0

<https://www.johansontechnology.com>

4001 Calle Tecate • Camarillo, CA 93012 • TEL 805.389.1166 FAX 805.389.1821

2018 Johanson Technology, Inc. All Rights Reserved

# High Frequency Ceramic Solutions

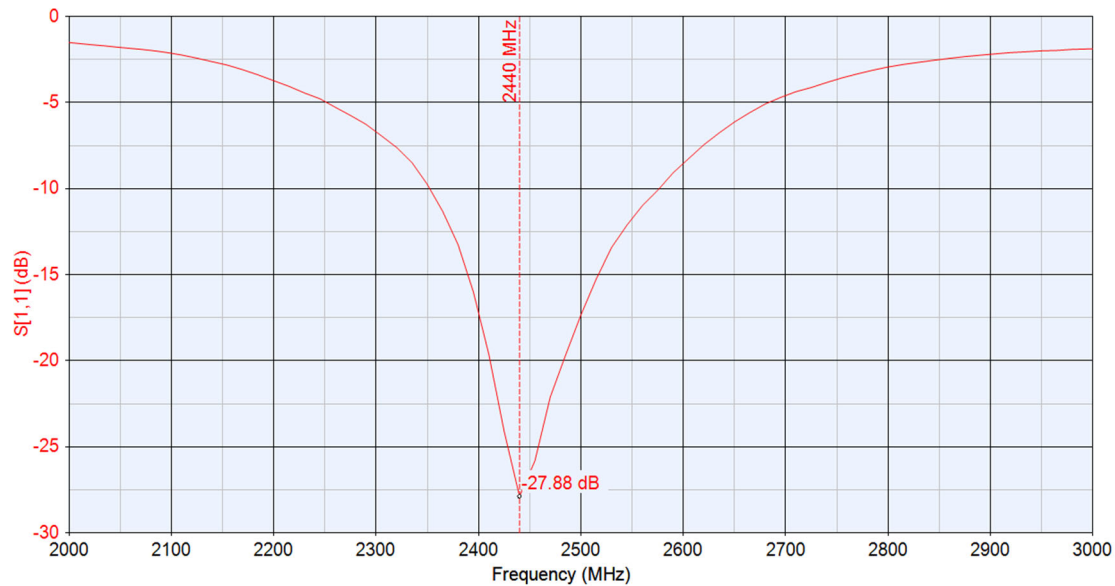
2.4GHz Mini Antenna, SMT

P/N 2450AT18B100

Detail Specification: 11/5/2018

Page 3 of 5

## Mounting Considerations 1: Typical Electrical Performance (T=25°C)



Would you like the antenna layout? Have antenna tuning issues?  
Please contact us if you have any questions regarding the implementation of this antenna in your PCB's layout. We'll be happy to guide you to maximize the antenna's performance.

Contact our applications engineers at:

<https://www.johansontechnology.com/ask-a-question>

Johanson Technology, Inc. reserves the right to make design changes without notice.  
All sales are subject to Johanson Technology, Inc. terms and conditions.



Ver. 4.0

<https://www.johansontechnology.com>

4001 Calle Tecate • Camarillo, CA 93012 • TEL 805.389.1166 FAX 805.389.1821

2018 Johanson Technology, Inc. All Rights Reserved

# High Frequency Ceramic Solutions

2.4GHz Mini Antenna, SMT

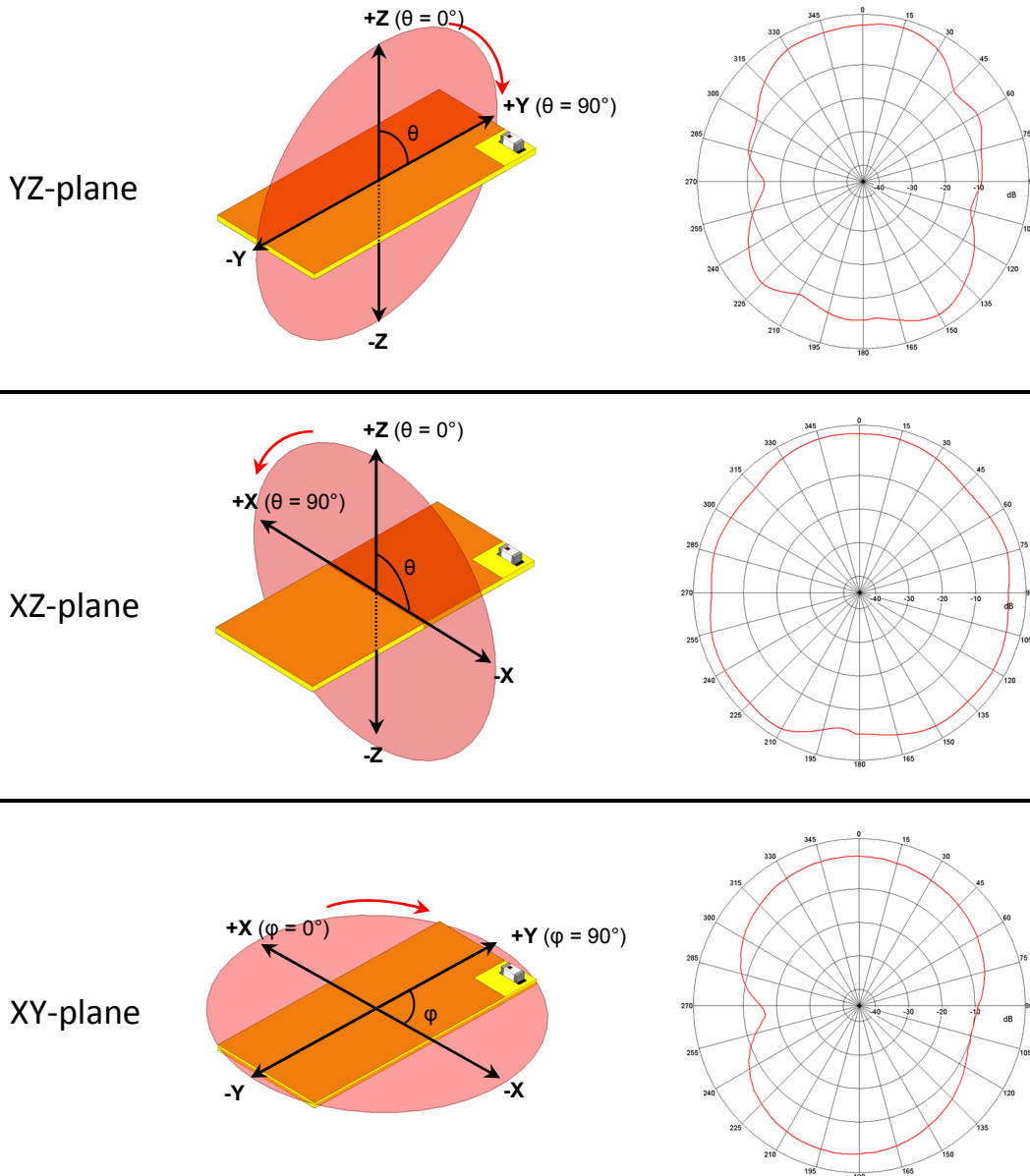
P/N 2450AT18B100

Detail Specification: 11/5/2018

Page 4 of 5

## Mounting Considerations 1: Antenna Performance

Typical 2D radiation patterns @ 2.44GHz



Johanson Technology, Inc. reserves the right to make design changes without notice.  
All sales are subject to Johanson Technology, Inc. terms and conditions.



Ver. 4.0

<https://www.johansontechnology.com>

4001 Calle Tecate • Camarillo, CA 93012 • TEL 805.389.1166 FAX 805.389.1821

2018 Johanson Technology, Inc. All Rights Reserved

# High Frequency Ceramic Solutions

**2.4GHz Mini Antenna, SMT**

**P/N 2450AT18B100**

Detail Specification: 11/5/2018

Page 5 of 5

**Antenna tuning, optimization, and validation services:**

<https://www.johansontechnology.com/ipc-antenna-services>

**For more antennas and to download measured S-parameters, go to:**

<https://www.johansontechnology.com/antennas>

**Soldering Information**

<https://www.johansontechnology.com/ipcsoldering-profile>

**MSL Info**

<https://www.johansontechnology.com/msl-rating>

**Packaging information**

<https://www.johansontechnology.com/tape-reel-packaging>

**For layout review contact our Applications Team at:**

<https://www.johansontechnology.com/ask-a-question>

**RoHS Compliance**

<https://www.johansontechnology.com/rohs-compliance>

Need help designing the antenna in? Use our antenna design services!

<https://www.johansontechnology.com/ipc-antenna-services>

We provide 2 free layout reviews and if you need us to tune and characterize the antenna on your product (inside our anechoic chamber) we can do that too. Small lab fee may apply.

Johanson Technology, Inc. reserves the right to make design changes without notice.

All sales are subject to Johanson Technology, Inc. terms and conditions.



Ver. 4.0

<https://www.johansontechnology.com>

4001 Calle Tecate • Camarillo, CA 93012 • TEL 805.389.1166 FAX 805.389.1821

2018 Johanson Technology, Inc. All Rights Reserved

## Looking for pricing, stock, or lifecycle information?

Click below to explore more details on WIN SOURCE:

 [View 2450AT18B100E on WIN SOURCE](#)

 [Johanson Technology Inc. Information](#)

## Optimize Your Supply Chain with WIN SOURCE Solutions

-  Global Sourcing Solution
-  Obsolete Management
-  Cost Control Management
-  Shortage Management
-  Alternative Solution
-  Excess Inventory Management