



THE DATASHEET OF
1054301102



Nano-Fit Power Connectors



Nano-Fit Power Connectors deliver up to 8.0A with a 2.50mm pitch, while also offering keying options to ensure proper mating and terminal position assurance (TPA) retainers to prevent terminal backout

Features and Advantages

Smallest fully isolated headers in the market

Provides a small package that eases space constraints. Allows up to 69% more space in the x-axis than competing connectors



Multiple mechanical keying and color-coded options

Help to prevent risk of cross-mating. Enables faster assembly with visual indication of proper mating



Ultra-low mate force terminal

Reduces operator fatigue. Improves assembly compliance for high-circuit applications



Terminals available in gold and tin plating

Deliver different cost options while meeting performance needs



Retention tang and contact rib

Maintain stable contact

Terminal Interface with 4 points of contact

Offers redundant, secondary current paths for long term performance and reliability

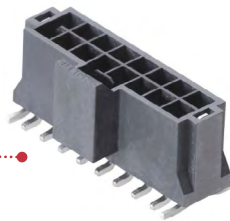


Optional TPA (Terminal Position Assurance) Retainer

Ensures terminals are fully seated in housing to reduce backout. Retains terminals if main retention feature fails

Multi-layer boards

Eliminate need of through-hole. Ensures mated connector assemblies will not accidentally disengage



Available in embossed tape for pick-and-place assembly

Enables quick and accurate component placement to meet fast time-to-market

Positive-lock housing with anti-snag design

Ensures mated connector assemblies will not accidentally disengage



Applications

Consumer/ Home Appliance

- Refrigerators
- Washers and dryers
- Mobile devices

Telecommunications/ Networking

- Servers
- Hubs

Automotive

- Interior Lighting

Lighting

- Home lighting fixtures
- Ballasts

Aerospace and Defense

- C4ISR

Industrial

- Assembly line equipment
- Food and beverage

Medical

- Healthcare IT
- Patient care equipment



Automotive Interior Lighting



Washers and Dryers

Specifications

REFERENCE INFORMATION

Packaging
 Terminals - Reel
 Headers - Tray, Embossed Tape, and Reel
 Receptacles - Bag
 UL File No: E29179
 CSA File No: LR19980
 Mates with: Nano-Fit Connectors and Receptacles Only- No competitive cross
 Use with: Nano-Fit Terminals and TPA Retainers Only - No competitive cross
 Terminal Used: Reel
 Designed In: Millimeters
 RoHS: Yes
 Halogen Free: Yes
 Glow Wire Capable: Yes

ELECTRICAL

Voltage (Max): 250V
 Current (Max): 8.0A
 Contact Resistance: 10 milliohms change over life
 Dielectric Withstanding Voltage: 1500V
 Insulation Resistance: 1000 Megohms

MECHANICAL

Contact Insertion Force: 2.5N
 Contact Retention to Housing: 27N
 Insertion Force to PCB: 5N
 Mating Force: 3N
 Unmating Force: 3N
 Cycles: 20 cycles (Tin), 50 cycles (Gold)

PHYSICAL

Housing:
 Receptacle: Nylon UL 94V-0
 Header: LCP UL 94V-0
 Contact: High- Conductivity Copper
 Plating:
 Contact Area —
 0.38 Tin or 381 μ (15 μ) Gold or 762 μ 0.76 (30 μ) Gold
 Solder Tail Area — Tin
 Underplating — Nickel
 PCB Thickness: 1.60 and 2.40mm
 Operating Temperature: -40 to +105°C (Tin), -40 to +115°C (Gold)

Ordering Information

HEADERS

Series	Row	Orientation	Circuits	Termination Style	Solder Clip	Color
105429	Dual	Vertical	4 to 16	SMT	No	Black and Natural
105431	Single	Vertical	2 to 8			
105430	Single	Right Angle	2 to 8			
105405	Dual	Right Angle	4 to 16			
105309	Single	Vertical	2 to 8	Through Hole	Yes	
105310	Dual		4 to 16			
105311	Single		2 to 8			
105312	Dual		4 to 16			
105313	Single	Right Angle	2 to 8	No		
105314	Dual		4 to 16			

RECEPTACLE HOUSING

Series	Circuits	Rows	Color
105307	2 to 8	Single	Black/Natural
105308	4 to 16	Dual	

PLUG HOUSING

Series	Row	Circuits	Panel Mount	Color
200277	Single	2 to 8	Panel Mount and Free Hanging	Black/Natural
201444	Dual	4 to 16		

TERMINAL POSITION ASSURANCE (TPA) RETAINER

Series	Circuits	Color
105325	2 to 8	Black/Natural

CRIMP TERMINALS

Series	Type	Wire Gauge (AWG)	Plating
201447	Male	20 to 26	Tin, Gold
105300	Female		

www.molex.com/link/nanofit.html

Looking for pricing, stock, or lifecycle information?

Click below to explore more details on WIN SOURCE:

 [View 1054301102 on WIN SOURCE](#)

 [Molex, LLC Information](#)

Optimize Your Supply Chain with WIN SOURCE Solutions

-  Global Sourcing Solution
-  Obsolete Management
-  Cost Control Management
-  Shortage Management
-  Alternative Solution
-  Excess Inventory Management