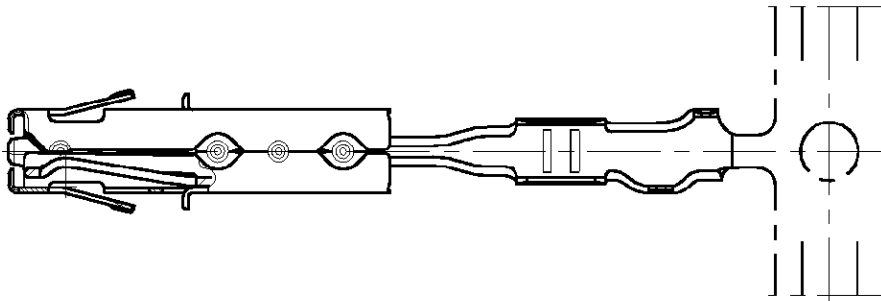
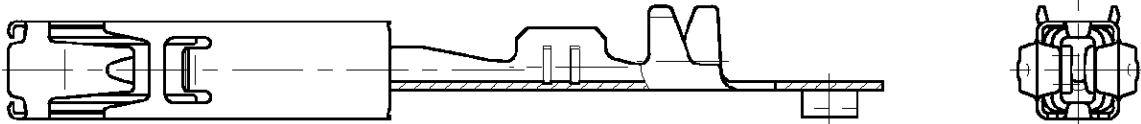




**THE DATASHEET OF**  
**1241372-1**



MATED WITH: PASSEND ZU:	LOC	DIST	REVISIONS AENDERUNGEN DESCRIPTION BESCHREIBUNG				DATE	DWN	APVD
-	AI	-	P	LTR					
PROJEKT NR.: A98-52238				A	NEW DRAWING	09.06.99	-	BE	
				A1	TITLE COMPLETED	27.06.01	-	BE	
				A2	SPRING MODIFY	27.02.02	-	RL	



REFER TO PRODUCT GROUP DRAWING 1241436  
FOR LATEST INFORMATION ON THE PART

Auf die Produkt-Gruppenzeichnung 1241436

für die aktuelle Information zum Teil wird hingewiesen

RELEASED FOR PUBLICATION  
 FREI FUER VEROEFFENTLICHUNG  
 ALL RIGHTS RESERVED  
 ALLE RECHTE VORBEHALTEN.  
 BY TYCO  
 COPYRIGHT 2001  
 THIS DRAWING IS UNPUBLISHED  
 VERTRAULICHE UNVEROEFFENTLICHTE ZEICHNUNG



-	-	-	-	-	-	-	-
CUSTOMER PART NO	AMP PART NO	REV.	PCS.	MATERIAL	SURFACE COLOR	DESCRIPTION	
DIMENSIONS: DIMENSIONEN: mm	DWN B. Egenolf 09-JUN-1999	MATERIAL		FINISH OBERFLAECHE/FARBE		-	
TOLERANCES UNLESS OTHERWISE SPECIFIED: ALLGEMEINTOLERANZEN	CHK B. Egenolf 27-JUN-2001	Tyco Electronics AMP GmbH D - 64625 Bensheim					
1. ISO 8015 2. ISO 2768 - mH -E 3. DIN 16901 - 140	APVD -						
0 PLC ± 1 PLC ± 2 PLC ± 3 PLC ± ANGLES / WINKEL ±-	PRODUCT SPEC PRODUKTSPEZ. -	NAME AMP MCP1.5K FLATTYPE RECEPTACLE AMP MCP1.5K Flachkontakt					
	APPLICATION SPEC VERARBEITUNGSSPEZ. -	SIZE	CAGE CODE	DRAWING NO ZEICHNUNGS-NR.	RESTRICTED TO NUR FUER		
	WEIGHT GEWICHT -	A4 00779		G-1241372		-	
CUSTOMER DRAWING /KUNDENZEICHNUNG				MASSSTAB 5:1	BLATT 1 OF 1 VON 1	A2	

AMP 1469-35 REV 27JUN96

**Lead Free Conversion in Process - Refer to Specification 230-700 at [www.tycoelectronics.com/leadfree](http://www.tycoelectronics.com/leadfree)**

## Looking for pricing, stock, or lifecycle information?

Click below to explore more details on WIN SOURCE:

-  [View 1241372-1 on WIN SOURCE](#)
-  [TE Connectivity Information](#)

## Optimize Your Supply Chain with WIN SOURCE Solutions

-  Global Sourcing Solution
-  Obsolete Management
-  Cost Control Management
-  Shortage Management
-  Alternative Solution
-  Excess Inventory Management