



**THE DATASHEET OF  
CM1230-02CP**



# CM1230

## 2, 4, and 8-Channel Low-Capacitance ESD Protection Array

### Product Description

The CM1230 is a family of 2, 4 and 8 channel, very low capacitance ESD protection diode arrays in a CSP form factor. It is ideal for protecting systems with high data and clock rates or for circuits that need low capacitive loading. Each channel consists of a pair of ESD diodes that act as clamp diodes to steer ESD current pulses to either the positive or negative supply rail. A Zener diode is integrated between the positive and negative supply rails. The  $V_{CC}$  rail is protected from ESD strikes and eliminates the need for a bypass capacitor to absorb positive ESD strikes to ground. Each channel can safely dissipate ESD strikes of  $\pm 8$  kV, meeting the Level 4 requirement of the IEC61000-4-2 international standard as well as  $\pm 15$  kV air discharges per the IEC61000-4-2 specification. Using the MIL-STD-883 (Method 3015) specification for Human Body Model (HBM) ESD, the pins are protected for contact discharges at greater than  $\pm 15$  kV.

This device is well-suited for next generation wireless handsets that implement high-speed serial interface solutions for the LCD display and camera interfaces. In these designs, a tolerance above 1.5 pF cannot be tolerated when high data rates are transferred between the baseband chip and the LCD driver/controller ICs. Higher capacitive loading normally causes the rise and fall times to slow which hampers the functionality of circuit and operation of the wireless handset. The CM1230 incorporates *OptiGuard™* which results in improved reliability at assembly. The CM1230 is available in a space-saving, low profile Chip Scale Package with RoHS-compliant, lead-free finishing.

### Features

- Two, Four, and Eight Channels of ESD Protection
- Provides ESD Protection to IEC61000-4-2 Level 4  $\pm 8$  kV Contact Discharge &  $\pm 15$  kV Air Discharge
- Low Loading Capacitance of 0.8 pF Typical
- Minimal Capacitance Change with Temperature and Voltage
- Channel I/O to GND Capacitance Difference of 0.02 pF Typical is Ideal for Differential Signals
- Channel I/O to I/O Capacitance 0.15 pF Typical
- Zener Diode Protects Supply Rail and Eliminates the Need for External Bypass Capacitors
- Each I/O Pin Can Withstand Over 1000 ESD Strikes\*
- Available in 4, 6 and 10 Bump Chip Scale Packages (CSP)
- *OptiGuard™* Coated for Improved Reliability at Assembly
- These Devices are Pb-Free and are RoHS Compliant

### Applications

- I/O Port Protection for Mobile Handsets, Notebook Computers, DSCs, MP3 Players, PDAs, etc. Including USB, 1394 and Serial ATA
- LCD and Camera Data Lines in Wireless Handsets that use High-speed Serial Interfaces
- Wireless Handsets
- Handheld PCs/PDAs
- LCD and Camera Modules



ON Semiconductor®

<http://onsemi.com>



WLCSP4  
CP SUFFIX  
CASE 567CS

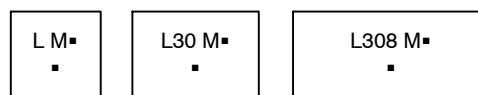


WLCSP6  
CP SUFFIX  
CASE 567BB



WLCSP10  
CP SUFFIX  
CASE 567BG

### MARKING DIAGRAM



CSP-4                  CSP-6                  CSP-10

Lxxx = Specific Device Code  
M = Date Code  
■ = Pb-Free Package  
(Note: Microdot may be in either location)

### ORDERING INFORMATION

Device	Package	Shipping†
CM1230-02CP (Note 1)	CSP-4 (Pb-Free)	3,500/Tape & Reel
CM1230-J2CP (Note 1)	CSP-4 (Pb-Free)	3,500/Tape & Reel
CM1230-04CP	CSP-6 (Pb-Free)	3,500/Tape & Reel
CM1230-08CP	CSP-10 (Pb-Free)	3,500/Tape & Reel

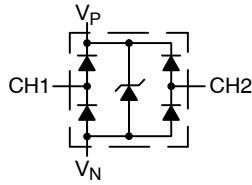
†For information on tape and reel specifications, including part orientation and tape sizes, please refer to our Tape and Reel Packaging Specification Brochure, BRD8011/D.

\*Standard test condition is IEC61000-4-2 level 4 test circuit with each (A<sub>OUT</sub>/B<sub>OUT</sub>) pin subjected to  $\pm 12$  kV contact discharge for 1000 pulses. Discharges are timed at 1 second intervals and all 1000 strikes are completed in one continuous test run.

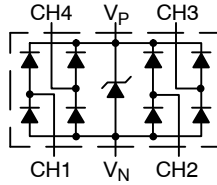
1. CM1230-02CP and CM1230-J2CP are the same mechanical package. Only difference is the Pin 1 orientation ('+' mark) on the tape and reel.

# CM1230

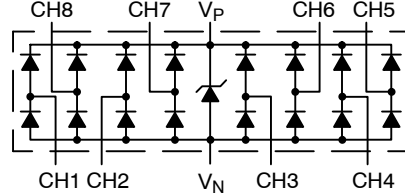
## ELECTRICAL SCHEMATIC



CM1230-02CP/  
CM1230-J2CP



CM1230-04CP



CM1230-08CP

Table 1. PIN DESCRIPTIONS

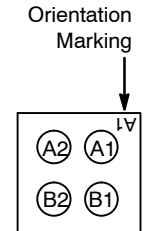
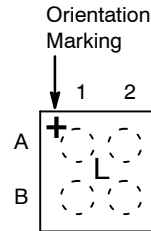
2-Channel, 4-Bump CSP			
Pin	Name	Type	Description
A1	V <sub>N</sub>	GND	Negative Voltage Supply Rail
B1	CH2	I/O	ESD Channel
A2	CH1	I/O	ESD Channel
B2	V <sub>P</sub>	PWR	Positive Voltage Supply Rail

4-Channel, 6-Bump CSP			
Pin	Name	Type	Description
A1	CH1	I/O	ESD Channel
B1	CH2	I/O	ESD Channel
A2	V <sub>P</sub>	PWR	Positive Voltage Supply Rail
B2	V <sub>N</sub>	GND	Negative Voltage Supply Rail
A3	CH3	I/O	ESD Channel
B3	CH4	I/O	ESD Channel

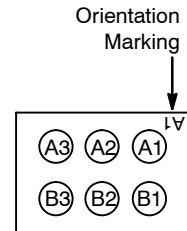
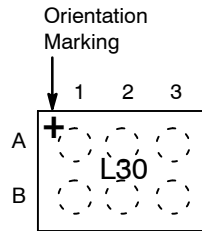
8-Channel, 10-Bump CSP			
Pin	Name	Type	Description
A1	CH1	I/O	ESD Channel
B1	CH2	I/O	ESD Channel
A2	CH3	I/O	ESD Channel
B2	CH4	I/O	ESD Channel
A3	V <sub>P</sub>	PWR	Positive Voltage Supply Rail
B3	V <sub>N</sub>	GND	Negative Voltage Supply Rail
A4	CH5	I/O	ESD Channel
B4	CH6	I/O	ESD Channel
A5	CH7	I/O	ESD Channel
B5	CH8	I/O	ESD Channel

## PACKAGE / PINOUT DIAGRAMS

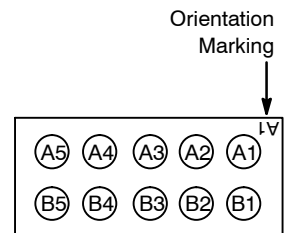
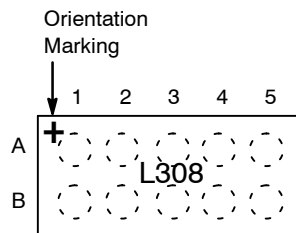
Top View (Bumps Down View)      Bottom View (Bumps Up View)



CM1230-02/J2  
4-bump CSP Package



CM1230-04  
6-bump CSP Package



CM1230-08  
10-bump CSP Package

# CM1230

## SPECIFICATIONS

**Table 2. ABSOLUTE MAXIMUM RATINGS**

Parameter	Rating	Units
Operating Supply Voltage ( $V_P - V_N$ )	6.0	V
Operating Temperature Range	-40 to +85	°C
Storage Temperature Range	-65 to +150	°C
DC Voltage at any Channel Input	$(V_N - 0.5)$ to $(V_P + 0.5)$	V

Stresses exceeding Maximum Ratings may damage the device. Maximum Ratings are stress ratings only. Functional operation above the Recommended Operating Conditions is not implied. Extended exposure to stresses above the Recommended Operating Conditions may affect device reliability.

**Table 3. STANDARD OPERATING CONDITIONS**

Parameter	Rating	Units
Operating Temperature Range	-40 to +85	°C

**Table 4. ELECTRICAL OPERATING CHARACTERISTICS** (Note2)

Symbol	Parameter	Conditions	Min	Typ	Max	Units
$V_P$	Operating Supply Voltage ( $V_P - V_N$ )			3.3	5.5	V
$I_P$	Operating Supply Current	$(V_P - V_N) = 3.3$ V			8.0	$\mu$ A
$V_F$	Diode Forward Voltage Top Diode Bottom Diode	$I_F = 8$ mA; $T_A = 25^\circ$ C	0.60 0.60	0.80 0.80	0.95 0.95	V
$I_{LEAK}$	Channel Leakage Current	$T_A = 25^\circ$ C; $V_P = 5$ V, $V_N = 0$ V, $V_{IN} = 0$ V to 5 V		$\pm 0.1$	$\pm 1.0$	$\mu$ A
$C_{IN}$	Channel Input Capacitance	At 1 MHz, $V_P = 3.3$ V, $V_N = 0$ V, $V_{IN} = 1.65$ V		0.80	1.2	pF
$\Delta C_{IN}$	Channel Input Capacitance Matching	At 1 MHz, $V_P = 3.3$ V, $V_N = 0$ V, $V_{IN} = 1.65$ V		0.02		pF
$C_{MUTUAL}$	Mutual Capacitance between signal pin and adjacent signal pin	At 1 MHz, $V_P = 3.3$ V, $V_N = 0$ V, $V_{IN} = 1.65$ V		0.15		pF
$V_{ESD}$	In-system ESD Protection Peak Discharge Voltage at any channel input, in system a) Contact discharge per IEC 61000-4-2 standard b) Human Body Model, MIL-STD-883, Method 3015	$T_A = 25^\circ$ C (Notes 4 and 5) $T_A = 25^\circ$ C (Notes 3 and 5)	$\pm 8$ $\pm 15$			kV
$V_{CL}$	Channel Clamp Voltage Positive Transients Negative Transients	$T_A = 25^\circ$ C, $I_{PP} = 1$ A, $t_P = 8/20$ $\mu$ S (Note 5)		+9.8 -1.8		V
$R_{DYN}$	Dynamic Resistance Positive Transients Negative Transients	$I_{PP} = 1$ A, $t_P = 8/20$ $\mu$ S Any I/O pin to Ground (Note 5)		0.76 0.56		$\Omega$

2. All parameters specified at  $T_A = -40^\circ$ C to  $+85^\circ$ C unless otherwise noted.

3. Human Body Model per MIL-STD-883, Method 3015,  $C_{Discharge} = 100$  pF,  $R_{Discharge} = 1.5$  K $\Omega$ ,  $V_P = 3.3$  V,  $V_N$  grounded.

4. Standard IEC 61000-4-2 with  $C_{Discharge} = 150$  pF,  $R_{Discharge} = 330$   $\Omega$ ,  $V_P = 3.3$  V,  $V_N$  grounded.

5. These measurements performed with no external capacitor on  $V_P$ .

6. Measured under pulsed conditions, pulse width = 0.7 ms, maximum current = 1.5 A.

PERFORMANCE INFORMATION

Input Channel Capacitance Performance Curves

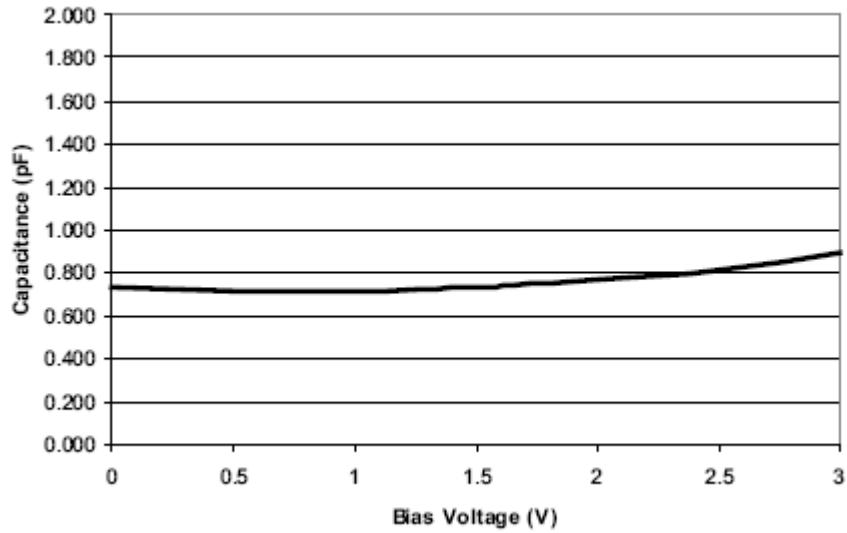


Figure 1. Typical Variation of  $C_{IN}$  vs.  $V_{IN}$   
 (f = 1 MHz,  $V_P = 3.3$  V,  $V_N = 0$  V, 0.1  $\mu$ F chip capacitor between  $V_P$  and  $V_N$ ,  $T_A = 25^\circ\text{C}$ )

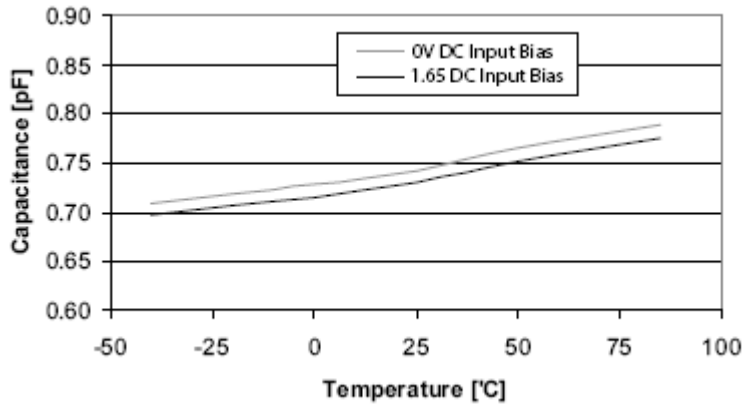


Figure 2. Typical Variation of  $C_{IN}$  vs. Temp  
 (f = 1 MHz,  $V_{IN} = 30$  mV,  $V_P = 3.3$  V,  $V_N = 0$  V, 0.1  $\mu$ F chip capacitor between  $V_P$  and  $V_N$ )

PERFORMANCE INFORMATION (Cont'd)

Typical Filter Performance (nominal conditions unless specified otherwise, 50 Ω Environment)

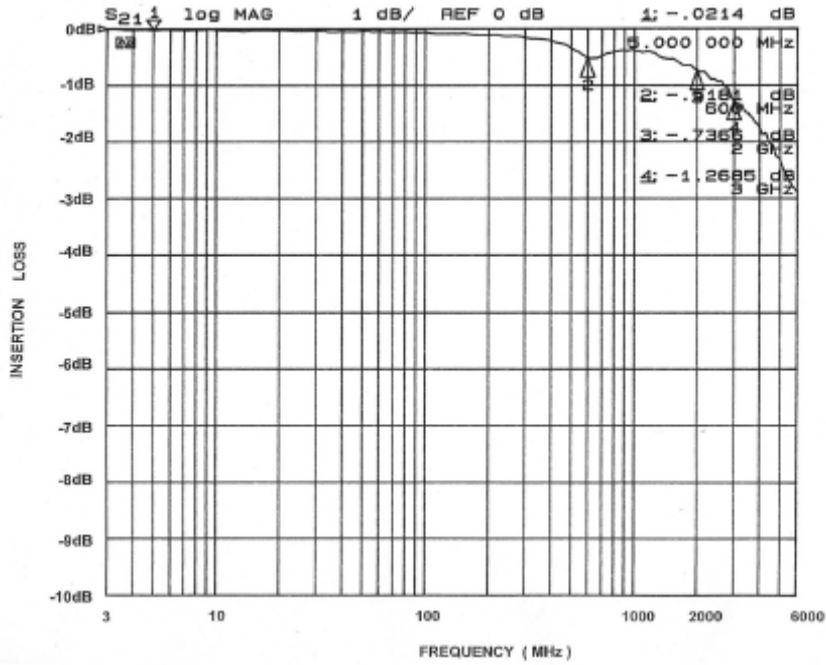


Figure 3. Insertion Loss vs. Frequency (0 V DC Bias,  $V_p = 3.3$  V)

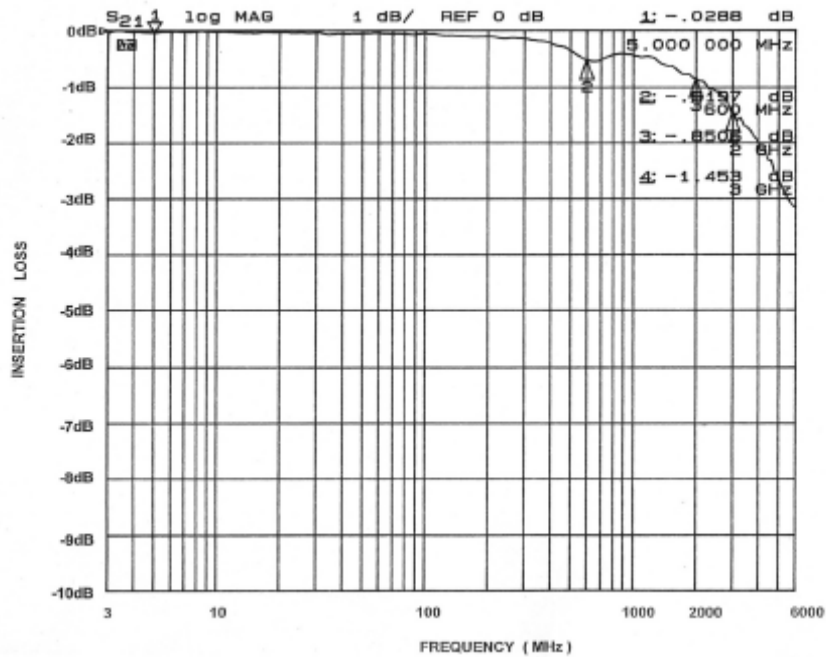


Figure 4. Insertion Loss vs. Frequency (2.5 V DC Bias,  $V_p = 3.3$  V)

APPLICATION INFORMATION

Table 5. PRINTED CIRCUIT BOARD RECOMMENDATIONS

Parameter	Value
Pad Size on PCB	0.275 mm
Pad Shape	Round
Pad Definition	Non-Solder Mask defined pads
Solder Mask Opening	0.325 mm Round
Solder Stencil Thickness	0.125 – 0.150 mm
Solder Stencil Aperture Opening (laser cut, 5% tapered walls)	0.330 mm Round
Solder Flux Ratio	50/50 by volume
Solder Paste Type	No Clean
Pad Protective Finish	OSP (Entek Cu Plus 106A)
Tolerance – Edge To Corner Ball	±50 µm
Solder Ball Side Coplanarity	±20 µm
Maximum Dwell Time Above Liquidous	60 seconds
Maximum Soldering Temperature for Lead-free Devices using a Lead-free Solder Paste	260°C

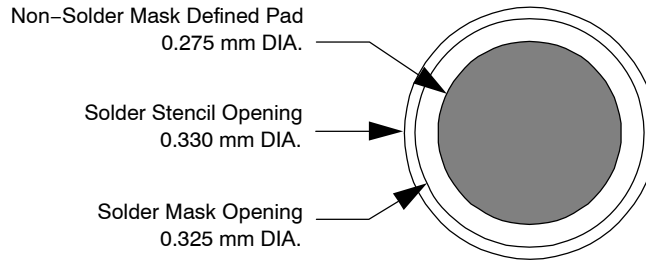


Figure 5. Recommended Non-Solder Mask Defined Pad Illustration

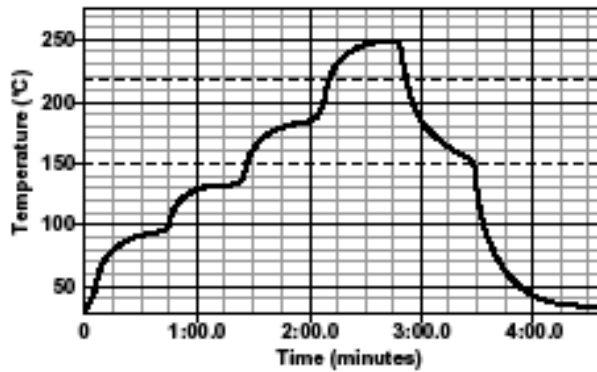
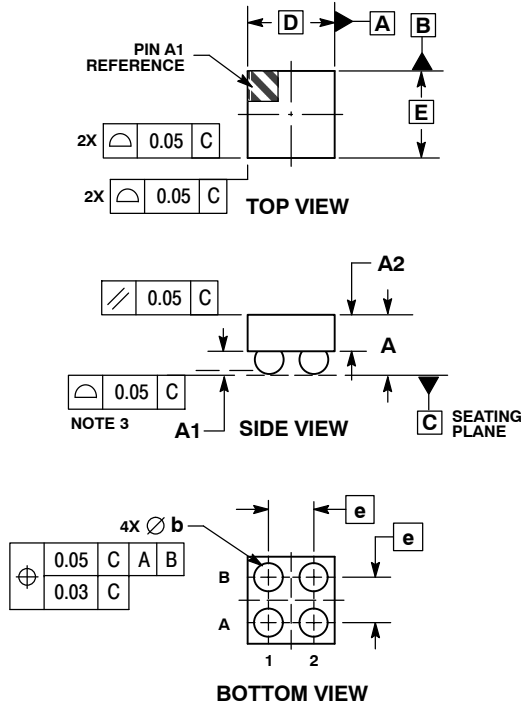


Figure 6. Lead-free (SnAgCu) Solder Ball Reflow Profile

# CM1230

## PACKAGE DIMENSIONS

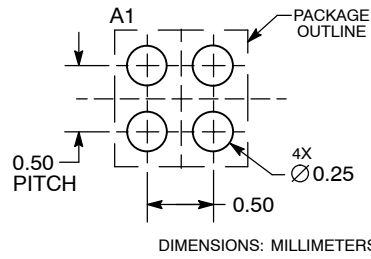
### WLCSP4, 0.96x0.96 CASE 567CS ISSUE O



- NOTES:
1. DIMENSIONING AND TOLERANCING PER ASME Y14.5M, 1994.
  2. CONTROLLING DIMENSION: MILLIMETERS.
  3. COPLANARITY APPLIES TO SPHERICAL CROWNS OF SOLDER BALLS.

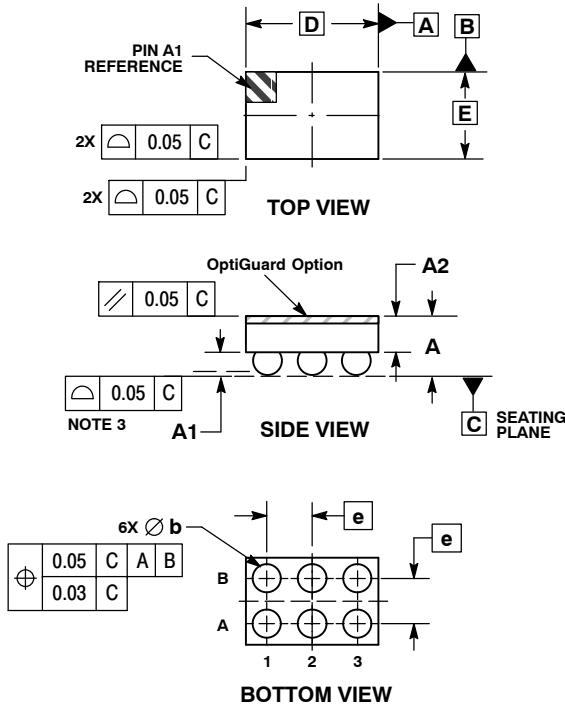
MILLIMETERS		
DIM	MIN	MAX
A	0.61	0.69
A1	0.21	0.28
A2	0.41 REF	
b	0.29	0.34
D	0.96 BSC	
E	0.96 BSC	
e	0.50 BSC	

### RECOMMENDED SOLDERING FOOTPRINT\*



\*For additional information on our Pb-Free strategy and soldering details, please download the ON Semiconductor Soldering and Mounting Techniques Reference Manual, SOLDERRM/D.

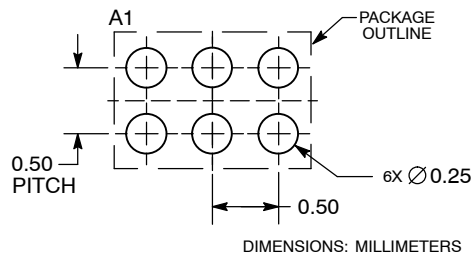
### WLCSP6, 1.46x0.96 CASE 567BB ISSUE O



- NOTES:
1. DIMENSIONING AND TOLERANCING PER ASME Y14.5M, 1994.
  2. CONTROLLING DIMENSION: MILLIMETERS.
  3. COPLANARITY APPLIES TO SPHERICAL CROWNS OF SOLDER BALLS.

MILLIMETERS		
DIM	MIN	MAX
A	0.56	0.72
A1	0.21	0.27
A2	0.42 REF	
b	0.29	0.35
D	1.46 BSC	
E	0.96 BSC	
e	0.50 BSC	

### RECOMMENDED SOLDERING FOOTPRINT\*

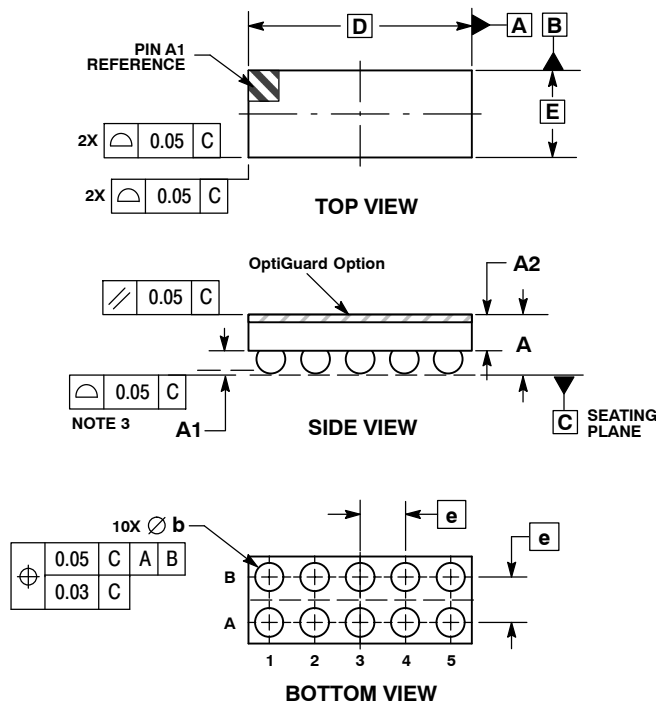


\*For additional information on our Pb-Free strategy and soldering details, please download the ON Semiconductor Soldering and Mounting Techniques Reference Manual, SOLDERRM/D.

# CM1230

## PACKAGE DIMENSIONS

WLCSP10, 2.46x0.96  
CASE 567BG  
ISSUE O

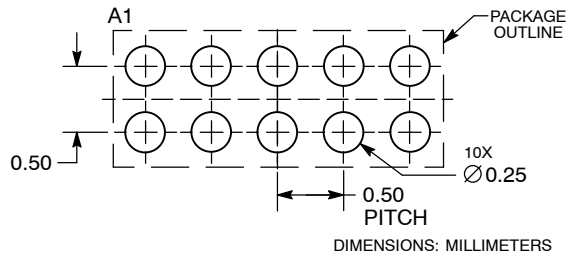


**NOTES:**

1. DIMENSIONING AND TOLERANCING PER ASME Y14.5M, 1994.
2. CONTROLLING DIMENSION: MILLIMETERS.
3. COPLANARITY APPLIES TO SPHERICAL CROWNS OF SOLDER BALLS.

DIM	MILLIMETERS	
	MIN	MAX
A	0.56	0.72
A1	0.21	0.27
A2	0.42	REF
b	0.29	0.35
D	2.46	BSC
E	0.96	BSC
e	0.50	BSC

**RECOMMENDED SOLDERING FOOTPRINT\***



\*For additional information on our Pb-Free strategy and soldering details, please download the ON Semiconductor Soldering and Mounting Techniques Reference Manual, SOLDERRM/D.

OptiGuard is a trademark of Semiconductor Components Industries, LLC.

ON Semiconductor and are registered trademarks of Semiconductor Components Industries, LLC (SCILLC). SCILLC reserves the right to make changes without further notice to any products herein. SCILLC makes no warranty, representation or guarantee regarding the suitability of its products for any particular purpose, nor does SCILLC assume any liability arising out of the application or use of any product or circuit, and specifically disclaims any and all liability, including without limitation special, consequential or incidental damages. "Typical" parameters which may be provided in SCILLC data sheets and/or specifications can and do vary in different applications and actual performance may vary over time. All operating parameters, including "Typicals" must be validated for each customer application by customer's technical experts. SCILLC does not convey any license under its patent rights nor the rights of others. SCILLC products are not designed, intended, or authorized for use as components in systems intended for surgical implant into the body, or other applications intended to support or sustain life, or for any other application in which the failure of the SCILLC product could create a situation where personal injury or death may occur. Should Buyer purchase or use SCILLC products for any such unintended or unauthorized application, Buyer shall indemnify and hold SCILLC and its officers, employees, subsidiaries, affiliates, and distributors harmless against all claims, costs, damages, and expenses, and reasonable attorney fees arising out of, directly or indirectly, any claim of personal injury or death associated with such unintended or unauthorized use, even if such claim alleges that SCILLC was negligent regarding the design or manufacture of the part. SCILLC is an Equal Opportunity/Affirmative Action Employer. This literature is subject to all applicable copyright laws and is not for resale in any manner.

**PUBLICATION ORDERING INFORMATION**

**LITERATURE FULFILLMENT:**  
Literature Distribution Center for ON Semiconductor  
P.O. Box 5163, Denver, Colorado 80217 USA  
**Phone:** 303-675-2175 or 800-344-3860 Toll Free USA/Canada  
**Fax:** 303-675-2176 or 800-344-3867 Toll Free USA/Canada  
**Email:** orderlit@onsemi.com

**N. American Technical Support:** 800-282-9855 Toll Free USA/Canada  
**Europe, Middle East and Africa Technical Support:**  
Phone: 421 33 790 2910  
**Japan Customer Focus Center**  
Phone: 81-3-5817-1050

**ON Semiconductor Website:** [www.onsemi.com](http://www.onsemi.com)  
**Order Literature:** <http://www.onsemi.com/orderlit>

For additional information, please contact your local Sales Representative

## Looking for pricing, stock, or lifecycle information?

Click below to explore more details on WIN SOURCE:

 [View CM1230-02CP](#) on WIN SOURCE

 [ON Semiconductor](#) Information

## Optimize Your Supply Chain with WIN SOURCE Solutions

-  Global Sourcing Solution
-  Obsolete Management
-  Cost Control Management
-  Shortage Management
-  Alternative Solution
-  Excess Inventory Management